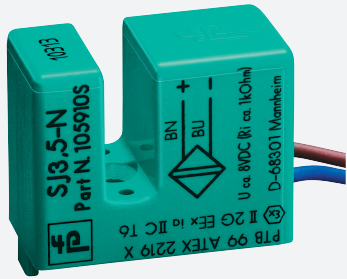


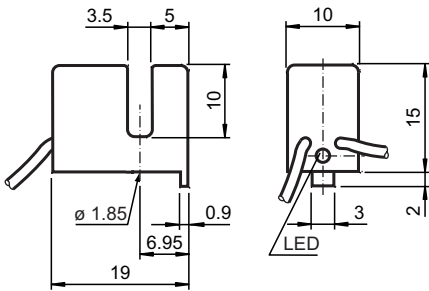
# Inductive slot sensor

## SJ3,5-N LED

- 3.5 mm slot width



### Dimensions



### Technical Data

#### General specifications

Switching function	Normally closed (NC)
Output type	NAMUR
Slot width	3.5 mm
Depth of immersion (lateral)	5 ... 7 mm , typ. 6 mm
Output type	2-wire

#### Nominal ratings

Nominal voltage	$U_o$	8.2 V ( $R_i$ approx. 1 k $\Omega$ )
Operating voltage	$U_B$	5 ... 25 V
Switching frequency	f	0 ... 3000 Hz
Hysteresis	H	0.1 ... 0.4 mm
Reverse polarity protection		reverse polarity protected
Suitable for 2:1 technology		yes , with reverse polarity protection diode
Current consumption		
Measuring plate not detected		$\geq 3$ mA at nominal voltage
Measuring plate detected		$\leq 1$ mA at nominal voltage
Switching state indicator		LED, yellow

Release date: 2020-08-13 Date of issue: 2020-08-13 Filename: 106586\_eng.pdf

Refer to "General Notes Relating to Pepperl+Fuchs Product Information".

Pepperl+Fuchs Group  
www.pepperl-fuchs.com

USA: +1 330 486 0001  
fa-info@us.pepperl-fuchs.com

Germany: +49 621 776 1111  
fa-info@de.pepperl-fuchs.com

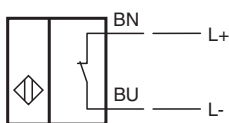
Singapore: +65 6779 9091  
fa-info@sg.pepperl-fuchs.com

**PF** PEPPERL+FUCHS

## Technical Data

Functional safety related parameters	
MTTF <sub>d</sub>	2370 a
Mission Time (T <sub>M</sub> )	20 a
Diagnostic Coverage (DC)	0 %
Compliance with standards and directives	
Standard conformity	
NAMUR	EN 60947-5-6:2000 IEC 60947-5-6:1999
Standards	EN 60947-5-2:2007 EN 60947-5-2/A1:2012 IEC 60947-5-2:2007 IEC 60947-5-2 AMD 1:2012
Approvals and certificates	
IECEX approval	
Equipment protection level Gb	IECEX PTB 11.0091X
Equipment protection level Da	IECEX PTB 11.0091X
Equipment protection level Mb	IECEX PTB 11.0091X
ATEX approval	
Equipment protection level Gb	PTB 99 ATEX 2219 X
Equipment protection level Da	PTB 99 ATEX 2219 X
UL approval	cULus Listed, General Purpose
CSA approval	cCSAus Listed, General Purpose
CCC approval	CCC approval / marking not required for products rated ≤36 V
Ambient conditions	
Ambient temperature	-25 ... 100 °C (-13 ... 212 °F)
Mechanical specifications	
Connection type	flexible leads LiY , 500 mm
Core cross-section	0.14 mm <sup>2</sup>
Housing material	PBT
Degree of protection	IP67
General information	
Use in the hazardous area	see instruction manuals

## Connection



Release date: 2020-08-13 Date of issue: 2020-08-13 Filename: 106586\_eng.pdf

Refer to "General Notes Relating to Pepperl+Fuchs Product Information".

Pepperl+Fuchs Group  
www.pepperl-fuchs.com

USA: +1 330 486 0001  
fa-info@us.pepperl-fuchs.com

Germany: +49 621 776 1111  
fa-info@de.pepperl-fuchs.com

Singapore: +65 6779 9091  
fa-info@sg.pepperl-fuchs.com

 PEPPERL+FUCHS