

Incremental rotary encoder ENI58IL-S

- Immunity to vibration, with mechanical latching
- Gold-plated and machined contacts
- Shield attached to connector housing
- Housing Ø 58 mm
- Solid shaft
- Servo or clamping flange
- Up to 5000 ppr
- Universal output driver
- BlueBeam technology for ultimate precision

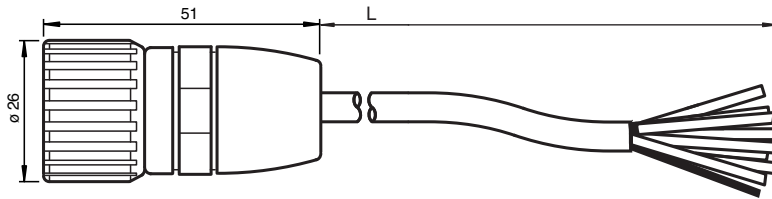
Female cordset, M23, 12-pin, PVC cable, 11-core



Function

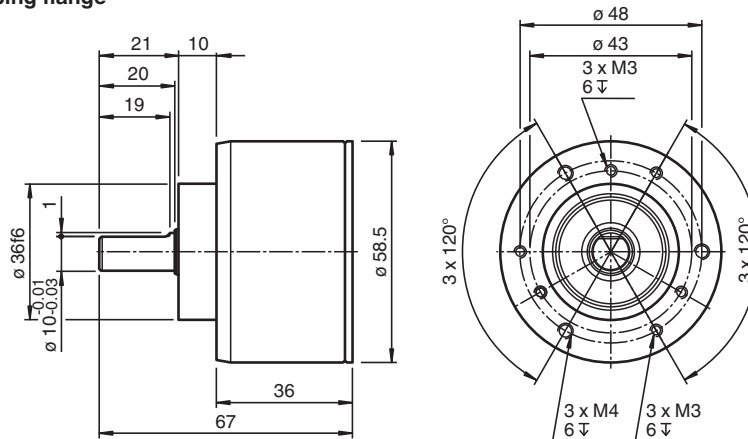
The ENI58IL impresses with its modular design, which is available over all mechanical and electrical interfaces. The ENI58IL is the best solution for all common applications, coupled with its high robustness, high reliability and versatility. With the high-precision BlueBeam technology and innovative housing design, the ENI58IL is the new market standard for incremental encoders.

Dimensions

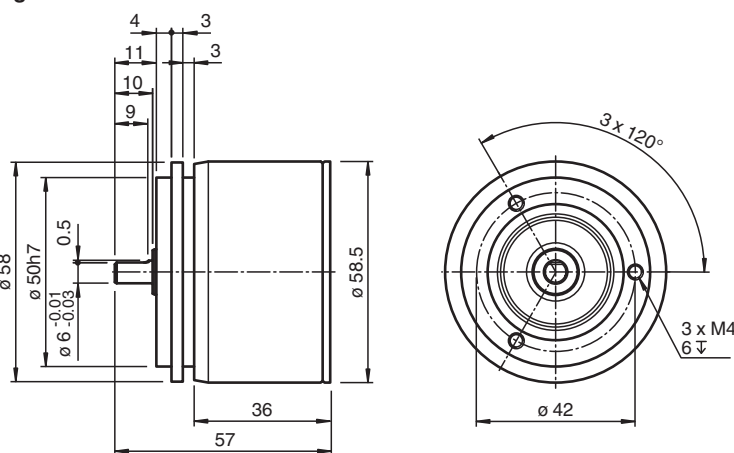


Dimensions

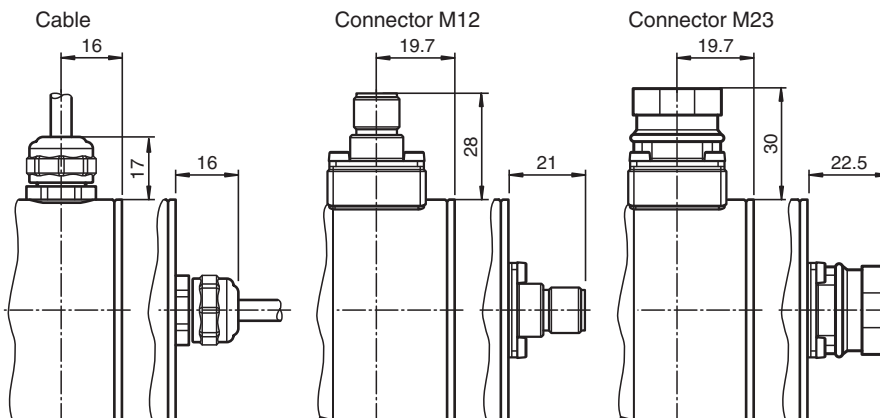
Clamping flange



Servo flange



Connections



Technical Data

General specifications

Detection type	photoelectric sampling
Linearity error	$\pm 0.025^\circ$
Number of pins	12
Connection 1	socket
Construction type 1	straight
Threading 1	M23
Pulse count	max. 5000

Release date: 2020-04-29 Date of issue: 2020-04-29 Filename: t1182005_eng.pdf

Refer to "General Notes Relating to Pepperl+Fuchs Product Information".

Pepperl+Fuchs Group
www.pepperl-fuchs.com

USA: +1 330 486 0001
fa-info@us.pepperl-fuchs.com

Germany: +49 621 776 1111
fa-info@de.pepperl-fuchs.com

Singapore: +65 6779 9091
fa-info@sg.pepperl-fuchs.com

PF PEPPERL+FUCHS

Technical Data

UL File Number	E223176 "For use in NFPA 79 Applications only" , if UL marking is marked on the product.	
Functional safety related parameters		
MTTF _d	140 a	
Mission Time (T _M)	20 a	
L ₁₀	70 E+9 at 6000 rpm	
Diagnostic Coverage (DC)	0 %	
Electrical specifications		
Operating voltage	U _B	4.75 ... 30 V DC
No-load supply current	I ₀	max. 50 mA
Output		
Output type	push-pull or RS422 (universal output driver, output level depending on input voltage)	
Load current	max. per channel 40 mA , short-circuit protected, reverse polarity protected	
Output frequency	max. 400 kHz	
Rise time	300 ns	
Phase position A to B		
Pulse counts < 3600	90 ° ± 9 ° electrical	
Pulse counts ≥ 3600	90 ° ± 15 ° electrical	
Duty cycle	1/2 ± 10 %	
Connection		
Connector	M12 connector, 8-pin M12 connector, 5 pin M23 connector, 12-pin	
Cable	Ø6 mm, 4 x 2 x 0.14 mm ² Fixed cable with M12 plug. 5-pin Fixed cable with M12 plug. 8-pin	
Standard conformity		
Degree of protection	DIN EN 60529, IP65, IP67	
Climatic testing	DIN EN 60068-2-78 , no moisture condensation	
Emitted interference	EN 61000-6-4:2007/A1:2011	
Noise immunity	EN 61000-6-2:2005	
Shock resistance	DIN EN 60068-2-27, 300 g, 6 ms	
Vibration resistance	DIN EN 60068-2-6, 30 g, 10 ... 2000 Hz	
Approvals and certificates		
UL approval	cULus Listed, General Purpose, Class 2 Power Source, Type 1 enclosure , if UL marking is marked on the product. adapters providing field wiring on request	
Maximum permissible ambient temperature	max. 80 °C (max. 176 °F)	
Ambient conditions		
Ambient temperature	cable, fixed: -40 ... 80 °C (-40 ... 176 °F) cable, flexing: -5 ... 70 °C (23 ... 158 °F)	
Operating temperature	-40 ... 85 °C (-40 ... 185 °F) , fixed cable -5 ... 85 °C (23 ... 185 °F) , movable cable	
Storage temperature	-40 ... 85 °C (-40 ... 185 °F)	
Pollution degree	3	
Mechanical specifications		
Degree of protection	IP67	
Material		
Housing	3.2315 aluminum (AlMgSi1, saltwater-proof)	
Flange	3.2315 aluminum (AlMgSi1, saltwater-proof)	
Shaft	Solid shaft Stainless steel	
Cable	PVC	
Mass	< 300 g without cable	
Rotational speed	max. 12000 min ⁻¹ for IP65 , max. 6000 min ⁻¹ for IP67	
Moment of inertia	≤ 35 gcm ²	
Starting torque	≤ 1 Ncm for IP65 , ≤ 2.5 Ncm for IP67	

Release date: 2020-04-29 Date of issue: 2020-04-29 Filename: t182005_eng.pdf

Refer to "General Notes Relating to Pepperl+Fuchs Product Information".

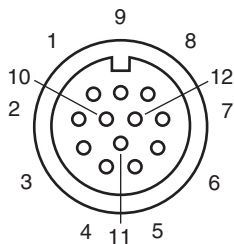
Pepperl+Fuchs Group
www.pepperl-fuchs.comUSA: +1 330 486 0001
fa-info@us.pepperl-fuchs.comGermany: +49 621 776 1111
fa-info@de.pepperl-fuchs.comSingapore: +65 6779 9091
fa-info@sg.pepperl-fuchs.com

PEPPERL+FUCHS

Technical Data

Shaft load	
Axial	40 N at max. 6000 min ⁻¹ 10 N at max. 12000 min ⁻¹
Radial	80 N at max. 6000 min ⁻¹ 20 N at max. 12000 min ⁻¹

Connection Assignment



Wire colors

1	PK	(pink)
2	VT	(violet)
3	BU	(blue)
4	RD	(red)
5	GN	(green)
6	YE	(yellow)
7	PK/GY	(pink/gray)
8	GY	(gray)
9		
10	WH	(white)
11	BK	(black)
12	BN	(brown)
--]		Screen


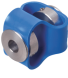










Accessories

	9416	Female connector
	9416L	Female connector
	MBT-36ALS	Spring-loaded mounting bracket with a diameter of 36 mm
	9203	Angled flange
	9401 10*10	Spring steel coupling
	9402 6*6	Spring steel coupling
	9404 6*6	Spring disk coupling

Release date: 2020-04-29 Date of issue: 2020-04-29 Filename: t182005_eng.pdf

Refer to "General Notes Relating to Pepperl+Fuchs Product Information".

Accessories

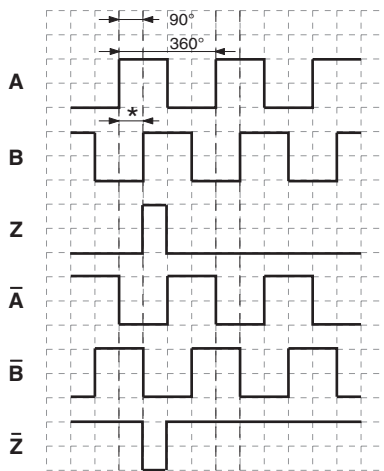
	9404 10*10	Spring disk coupling
	9408 10*10	Double loop coupling 10 x 10
	9409 6*6	Bellows coupling
	9409 10*10	Bellows coupling
	9410 6*6	Precision coupling
	9410 10*10	Precision coupling
	V19-G-5M-PVC-TP	Female cordset, M12, 8-pin, shielded, PVC cable
	V19-G-2M-PVC-TP	Female cordset, M12, 8-pin, shielded, PVC cable
	V19-G-10M-PVC-TP	Female cordset, M12, 8-pin, shielded, PVC cable
	V19-G-BK2M-PUR-U	Female cordset, M12, 8-pin, PUR-cable
	V19-G-BK5M-PUR-U	Female cordset, M12, 8-pin, PUR-cable
	V19-G-BK10M-PUR-U	Female cordset, M12, 8-pin, PUR-cable

Connection

Signal	Cable	Connector M23, 12-pin, clockwise	Connector M23, 12-pin, counterclockwise	Connector M12 x 1, 8-pin	Connector M12 x 1, 5-pin
GND	White	10	10	1	3
U _b	Brown	12	12	2	1
A	Green	5	5	3	2
B	Grey	8	8	5	4
\bar{A}	Yellow	6	6	4	-
\bar{B}	Pink	1	1	6	-
Z	Blue	3	3	7	5
\bar{Z}	Red	4	4	8	-
NC	Violet	2	2	-	-
NC	Grey/Pink	7	7	-	-
NC	-	9	9	-	-
NC	Black	11	11	-	-
Shielding	Shield	Housing	Housing	Housing	Housing
	<p>Note: Unused cores must be insulated individually before commissioning in order to avoid interference.</p>				

Operation

Signal outputs



↻ cw - with view onto the shaft
 phase relationships electrical
 * 1 Measuring step is 90° electrical

Type Code

Release date: 2020-04-29 Date of issue: 2020-04-29 Filename: t182005_eng.pdf



Connection type

B2 Fixed cable with M12 plug, 8-pin, 1 m

B4 Fixed cable with M12 plug, 5-pin, 1 m

C1 Cable, 1 m

C2 Cable, 2 m

C5 Cable, 5 m

CA Cable, 10 m

AA M23 device plug, clockwise (type 9416)

AB M23 device plug, counterclockwise (type 9416L)

BE M12 device plug, 8-pin (type V19)

BD M12 device plug, 5-pin (type V15)

Connection alignment

A axial

R radial

Electrical interface

UD1 Universal output driver UB 5 V ... 30 V

UD2 RS422, U_B 5 V ... 30 V

Pulse count

0100, 0120, 0125, 0200, 0256, **0360**, 0500, **1000**, **1024**, 1250, 1500, 1800, 2000, **2048**, **2500**, 3600, 4000, **4096**, **5000**

Degree of protection

5 IP65

7 IP67

Flange

CA Clamping flange

SA Servo flange

Shaft diameter

06 6 x 10 mm

08 8 x 20 mm

10 10 x 20 mm

12 12 x 20 mm

Shaft type

S Solid shaft

Version

IL Industrial Line

Size

58 Housing diameter 58 mm

Device type

ENI Incremental rotary encoder

Note: Preferred options are in bold letters.

Release date: 2020-04-29 Date of issue: 2020-04-29 Filename: t182005_eng.pdf